

Parel workshop was established in 1879 as a Steam Locomotive repair shop. Over the years the shop has diversified into carrying out different activities viz Diesel Loco Maintenance, Accident Relief Brake down Crane maintenance and other Rolling Stock repairs.

A historic step was taken in March 2007 with the manufacture of first Diesel Loco to cater to the demands of Steel Plants & Ports. Buoyed by this success, with this modest beginning, the Shop started manufacture of Locomotives. Now Parel Shop has taken giant strides and manufactured a century of Diesel Locomotives to serve Indian Railways.

The 100th Diesel Locomotive manufactured for the Indian Railways has been dedicated to the Railways by Shri Sanjiv Handa, Member Mechanical ,Railway Board on 16th October, 2010 at Parel Workshop.

Indian Express .Mumbai Edition Dated 19.10.2010.

Parel workshop comes of age, rolls out its 100th broad gauge engine

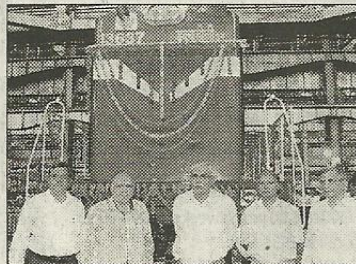
KALPANA VERMA

OCTOBER 18

PAREL workshop of the Central Railway (CR) crossed yet another milestone as 100th broad gauge engine manufactured by it rolled out last week. It was flagged off by member (mechanical) of the Railway Board Sanjiv Handa.

The workshop has manufactured 103 broad gauge engines in the last four years and earned around Rs 488 crore by selling 61 engines to private firms at the cost of Rs 8 crore per locomotive. Meanwhile, it has manufactured 41 engines for different units of the Indian Railways.

The first diesel locomotive was manufactured in March 2007 by the workshop to cater to the demands of Steel Plants&Ports. Buoyed by the success, the workshop started manufacturing diesel locomo-



Railway Board member Sanjiv Handa with other railway officials.

EXPRESS

Journey from 1879

Parel workshop was established in 1879 for carrying out repairs and periodical overhaul of steam engines. When the railways stopped using steam engines in 1972, the workshop started carrying out periodical overhaul of broad gauge diesel engines. At present, the workshop carries out overhaul of diesel, electric locos, BG and NG diesel hydraulic locos and 140-tonne cranes. It also does mid-life rehabilitation of coaches.

ENS

tives thereafter.

However, only 88 locomotives were manufactured till last year. The workshop has manufactured 15 broad gauge locomotives this year, of which three locomotives were made in September.

The idea of manufacturing diesel engines was conceptualised in July 2006. Staff of Parel workshop, then, were trained in DLW in BG locos assembling and various logistics like drawing of list of materials required, transportation, storage, testing of locos etc. The ground work of building a locomotive on the floor was started from August 2006, and first loco rolled out from here in March 2007.

"This is the result of hardwork of our staff. The workshop could manufacture 103 locomotives in four years. Now, it has not become an earning unit," said chief works manager Sunit Sharma of Parel workshop.